



Instructions

TACTILE RIVNUT INSTALLATION KIT

Thank you for purchasing the Tactile Rivnut Installation Kit from AAL! We greatly appreciate your trust in our company. We take that purchase and your commitment to us very seriously. If you have any questions along the way, please don't hesitate to give us a call at 385.202.4188.

****Please read these instructions thoroughly before starting this project.****

**** Note that nutserts can be installed with drill attachments, this product serves to provide a much more affordable alternative ****

Tools Required:

There is more than one tool for every job, but below is the list of tools we use for this installation.

- 13mm Ratchet Wrench
- 10mm Socket Wrench

What's Included:

Rivnut Installation Hardware:

M6x25mm Hex Head Bolt 1



M6 Flat Washer 2

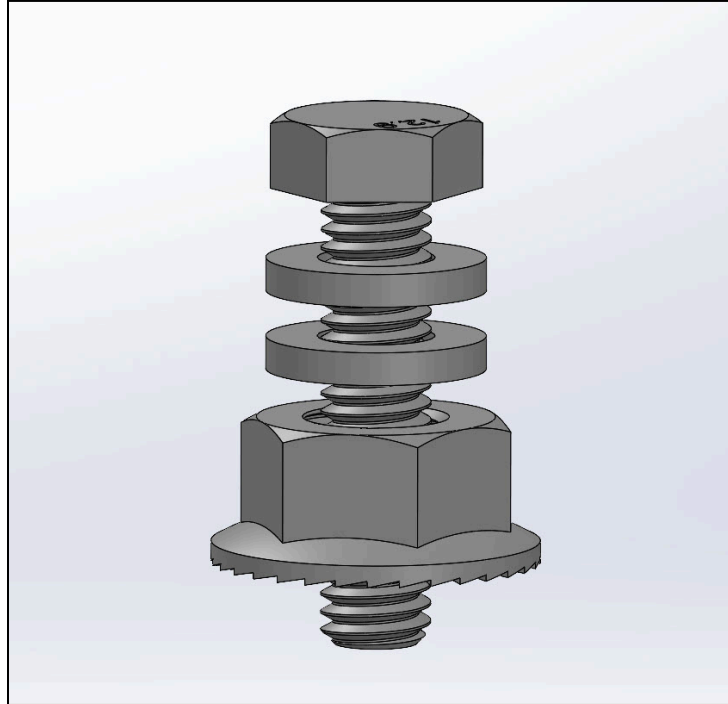


M8 Nut Flange 1

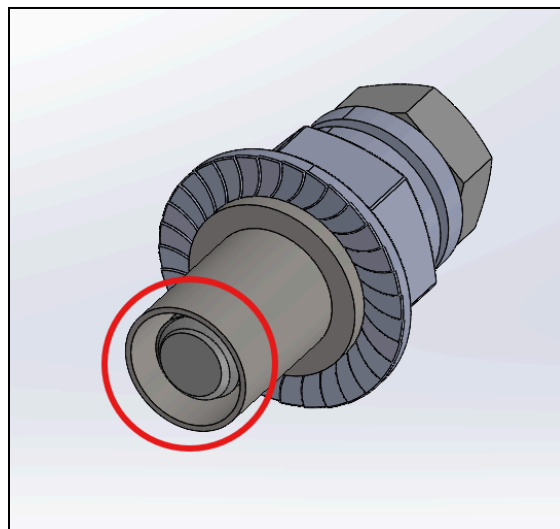


Step 1 - Align the hardware for installation

Take the M6 Hex Head Bolt and slide the two washers and M8 Flange Nut onto the bolt as shown below.



Once done, screw the nut up just enough such that the rivet can be threaded to be flush with the end of the bolt



Step 2 - Compress the Rivnut Into Place

The next step is to locate the hole in which you would like to place the rivnut. Slide the bolt fixture into the front face of the hole until the upper rim of the rivnut is flush with the front face of the surface. Then take the 13mm Ratchet wrench and place it around the M8 flange nut (this is the nut you will be cranking to compress the rivnut into place).



(Note the long nut in this example image is the serrated flange nut in our case)

Then take the 10mm Socket Wrench and place it on the Hex Head Bolt (this is the component you will hold in place). The orientation of the hardware should appear as follows.



Once your hardware is in this position, crank the 13mm ratchet wrench around the nut (clockwise) while holding the hex bolt in place with the 10mm socket wrench. Do this until the rivnut compresses into the hole and the fixture becomes almost impossible to turn.



Once done, use the 10mm wrench to unscrew the Hex Head Bolt and remove all hardware. The rivnut is now installed!

Share Your Photos!

We take great pride in building our products and we hope that pride extends to you after installing your Tactile Rivnut Installation Kit. If you are able to share your photos online (Facebook and Instagram), please tag **@AmericanAdventureLab**. We would love to see how it turned out and give you some reciprocal attention in return!

Congrats! You're all done!

Thank you!

At American Adventure Lab, we strive to improve anywhere we can. If you experience any issues with this product or have any suggestions, please let us know.

If you have any questions or concerns, please don't hesitate to reach out to us at 385.202.4188 or via email at Support@erp.adventurelab.com.

